

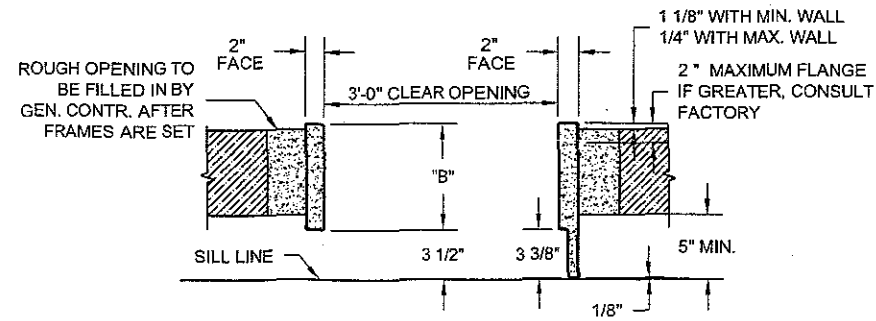
NOTES

THIS FRAME HAS A 2 HOUR WARNOCK HERSEY LABEL.
ALUMINUM SILL TO BE SUPPLIED.
MAXIMUM WHEEL LOAD FOR ALUMINUM SILL IS 1400 LBS.
FOR FACTORY USE-TRADITIONAL ENTRANCES.

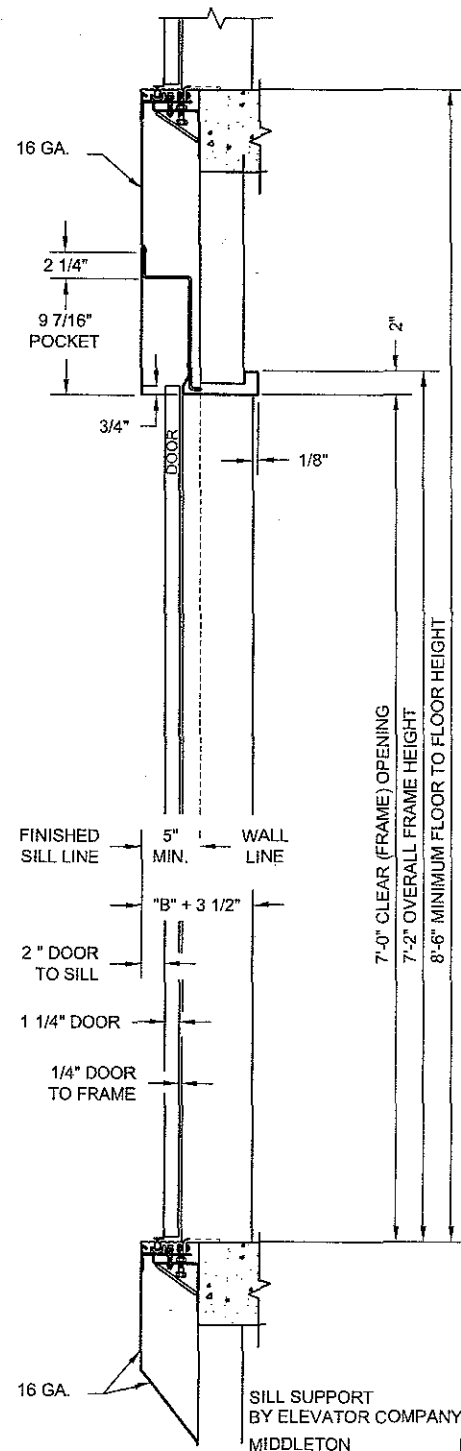
GC NOTE:
GENERAL CONTRACTOR RESPONSIBLE FOR HOISTWAY REINFORCING
AT FLOOR SLAB BEFORE INSTALLATION OF ENTRANCE FRAMES.
MINIMUM OF 4" HIGH x 8" WIDE REINFORCED CONCRETE, REINFORCED
FILLED BLOCK, WOOD OR STEEL BEAMS AT THE WALL LINE ON EACH SIDE
OF OPENING REQUIRED FOR ANCHORING SILL SUPPORT ASSEMBLY.
REINFORCING TO BE LOCATED WITH RESPECT TO REACTION POINTS.
REFERENCE INSTALLATION DRAWINGS 494NE, 494JT, AND 494JV
ARE AVAILABLE UPON REQUEST.

REACTIONS (LBS.) DUE TO LOADS ON DOOR PANELS. APPROX. HORIZ.
LOADS AND LOCATIONS TO BUILDING SHOWN PER ASME A17.1, PART II.
THE SPECIFIED LOADS ARE CONSIDERED IMPACTED.

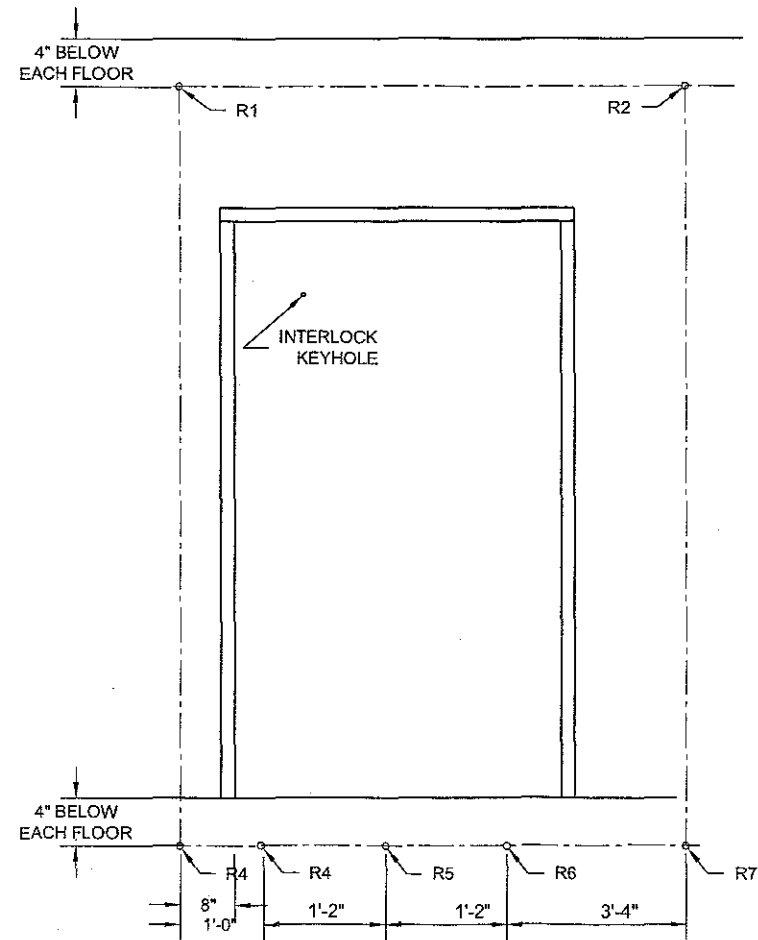
REACTIONS (LBS.)	
R1	290
R2	105
R3	95
R4	120
R5	360
R6	120
R7	35



MASONRY WALL TYPE FRAME
3 LEFT HAND REQUIRED AT FLOOR B,1-2 (FRONT)



SECTION




ENTRANCE ELEVATION
ONE SPEED LEFT HAND DOOR & ENTRANCE
ELEVATOR 1 (FRONT)

FLOOR	WALL TYPE		WALL SIZE (FRONT)				WALL SIZE (REAR)				OPENINGS AT		FRAME FINISH		DOOR FINISH			
	FRONT	REAR	FRONT	REAR	ACTUAL	MIN.	MAX.	OVERALL FRAME \"B\" DIM.	ACTUAL	MIN.	MAX.	OVERALL FRAME \"B\" DIM.	FRONT (QTY)	REAR (QTY)	FRONT	REAR	FRONT	REAR
1-2		MASONRY			8"	7 9/16"	8 9/16"	10 1/4"					2	0	B/E		B/E	
B		MASONRY			8"	7 9/16"	8 9/16"	10 1/4"					1	0	B/E		B/E	

DATE	SYM.	REVISION	BY
DESIGNED PER ASME A17.1		DO NOT SCALE THIS DRAWING	
FOR: RC COMPANY		ELEV # 1	
ADDRESS:			
CITY: POTTSTOWN, PA 19464			
ARCHITECT:			
GENERAL CONTRACTOR:			
ELEVATOR CONTRACTOR: METRO ELEVATOR			

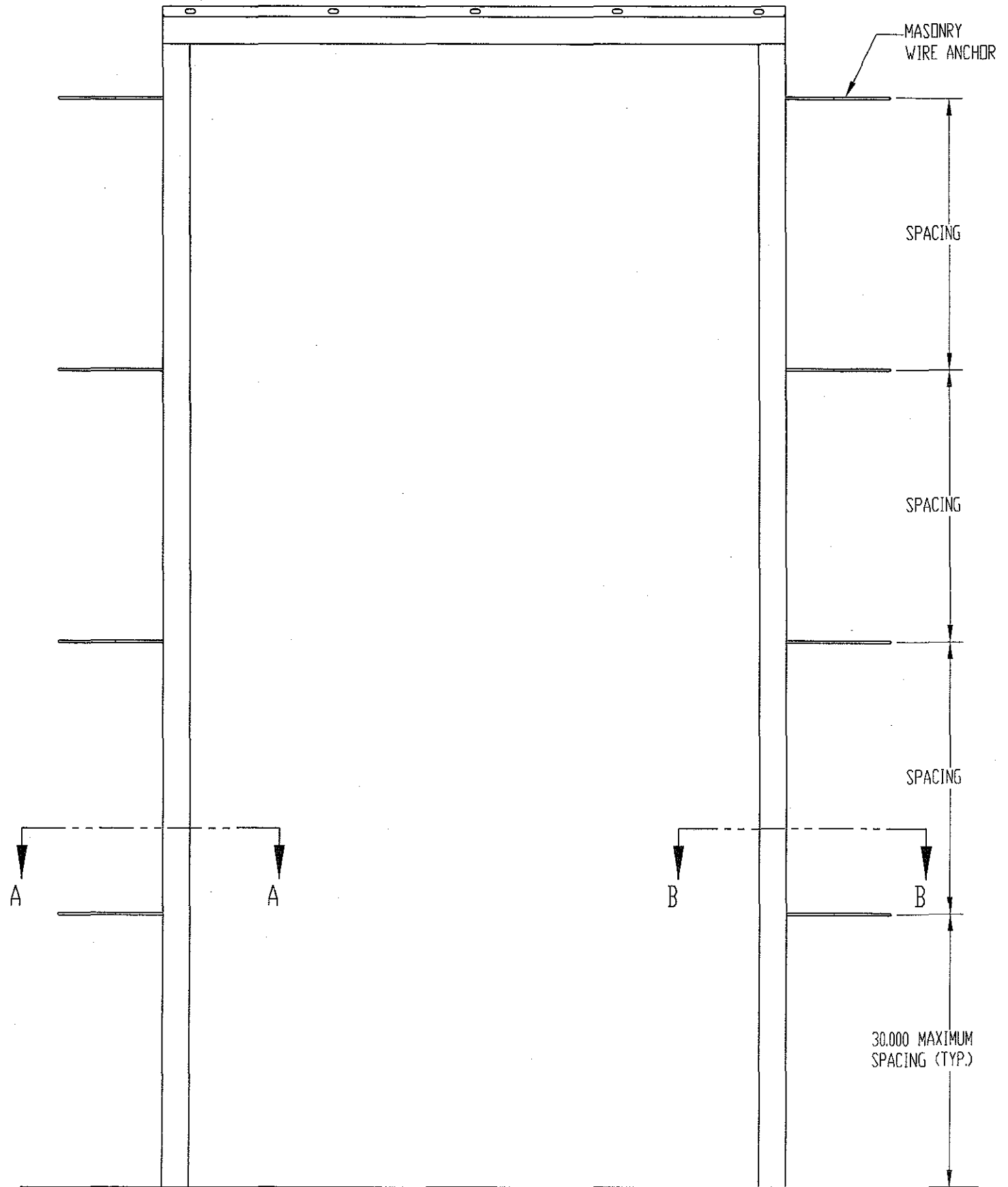
This drawing and all information thereon is the proprietary property of Vertical Express and must not be made public or copied. This drawing is loaned subject to return on demand and is not to be used directly or indirectly in any manner detrimental to the interest of Vertical Express.

EU5826

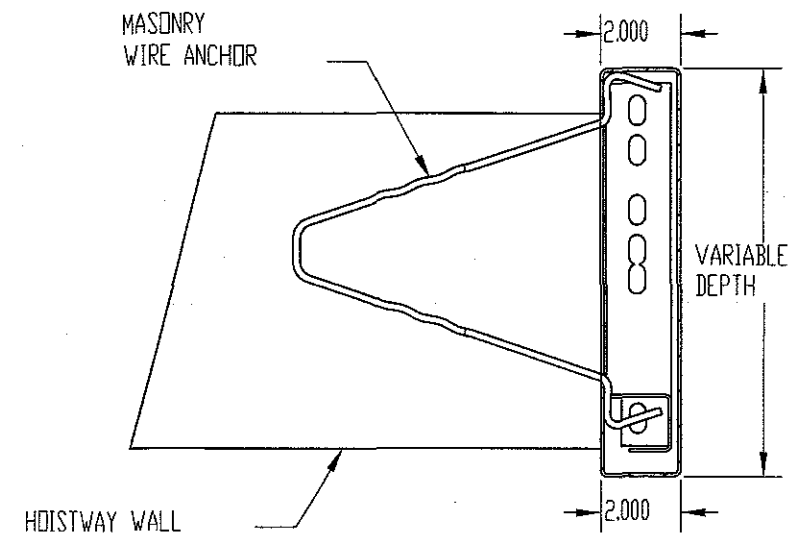


A Division of ThyssenKrupp Elevator

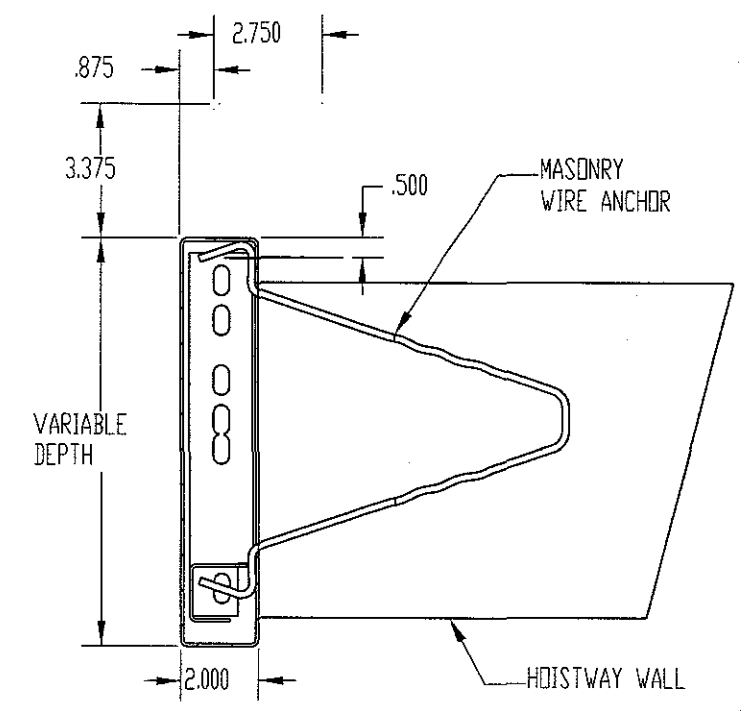
DWN	DATE	BRANCH	JOB NUMBER	DRAWING NO.	REV.	SHEET NO.
BR	05/06/05	E-U	EU5826	EN58261		1 OF 1



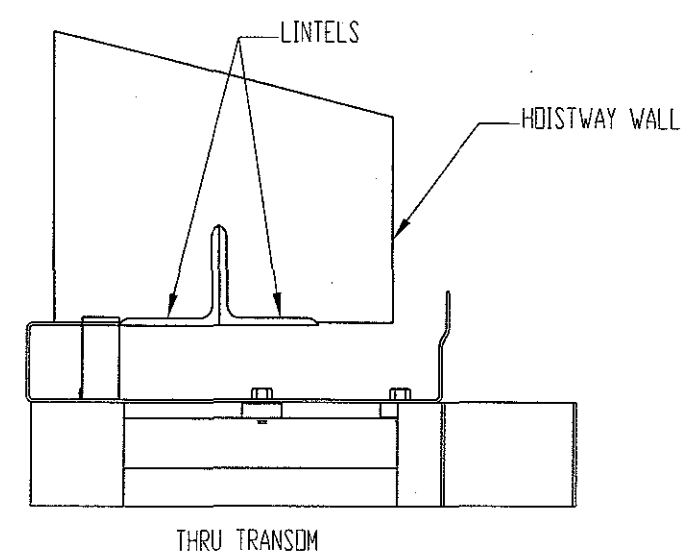
TYPICAL ELEVATION
(VIEWED FROM CORRIDOR)



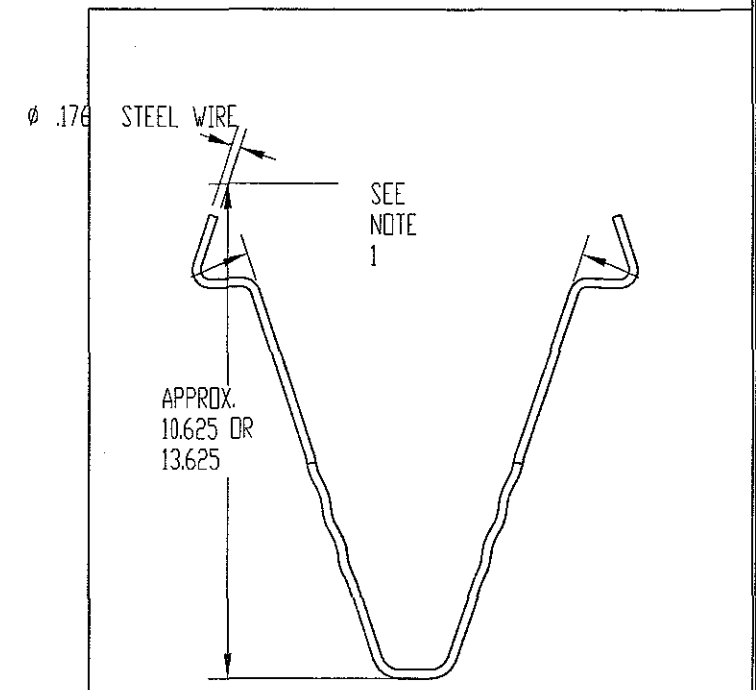
SECTION A-A
THRU RETURN (TYP.)



SECTION B-B
THRU STRIKE (TYP.)




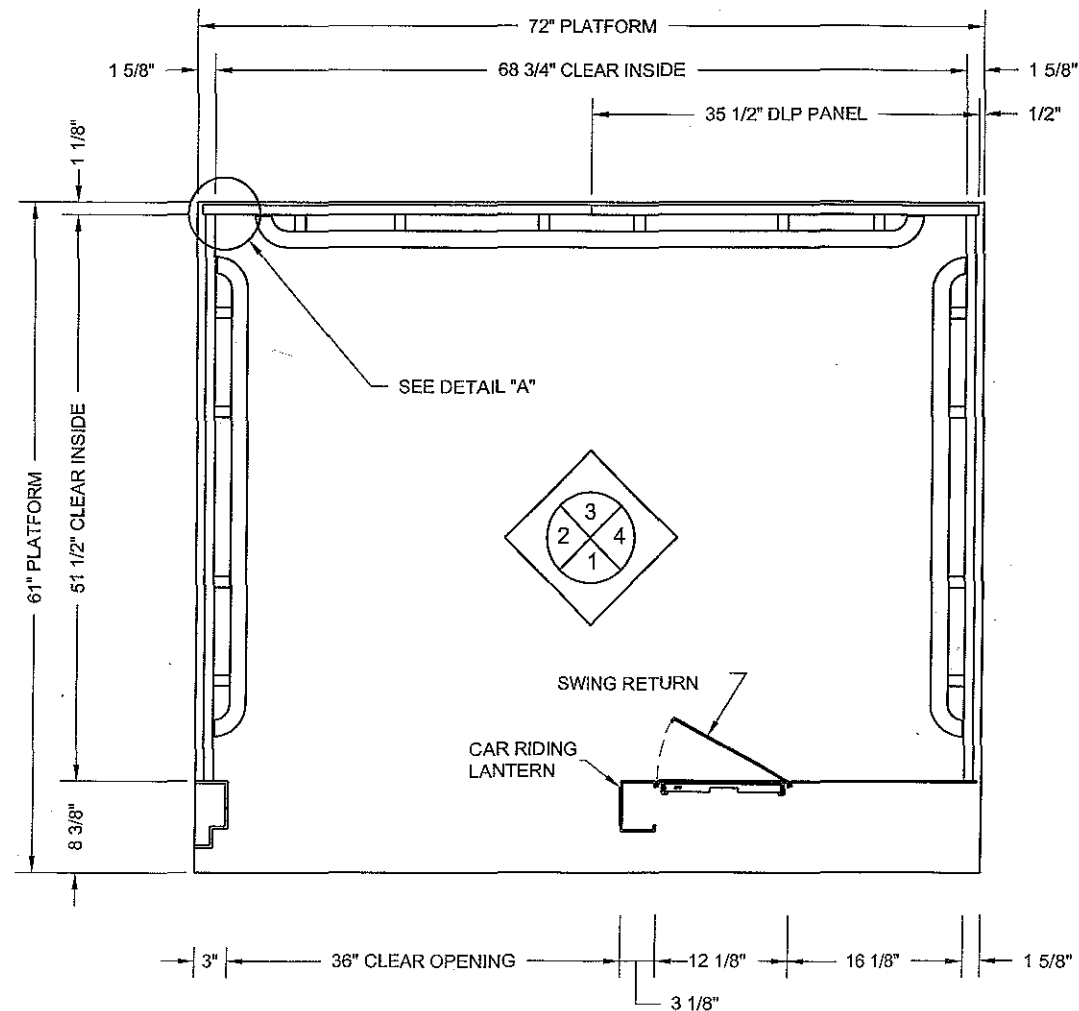
THRU TRANSOM



MASONRY WIRE ANCHOR DETAIL

NOTES:
1. SPREAD TO FIT FRAME DEPTH.

 A Division of ThyssenKrupp Elevator				ALL DIMS. IN INCHES GENERAL TOLERANCES DECIMAL: $\pm .030$ DIM. > 10.000: $\pm .060$ ANGLES SHEAR / PUNCH: 0.5° FORMING: $\pm 2^\circ$ UNLESS SHOWN OTHERWISE.		INSTRUCTIONS, INSTALLATION, HOISTWAY ENTRANCE FRAME MASONRY WALL, 2 HOUR LABEL			
THIRD ANGLE (ANSI STD.) PROJ.		DWN. RWH		CHKD. EAH		ENG. EAH		DATE 2/13/01	
B	202436	7/8/02	RH	EH	DRAWING NO.		REV.		
A	201833	2/13/01	RH	EH	494JT		B		
REV.	ECO. NO.	DATE	BY	THIS DRAWING WAS CAD GENERATED. DO NOT SCALE. SEE TECHNICAL DESIGN SERVICES FOR CHANGES.				SHEET 1 OF 1	



LAMINATED PLASTIC CAB DESIGN
ONE SPEED LEFT HAND DOOR AT FRONT

NOTES

CAB WALLS

3/4" PARTICLE BOARD CORE WALLS. EXTERIOR FACED WITH A 1/16" LAMINATE BACKING SHEET. INTERIOR FACED WITH PLASTIC LAMINATE AS SELECTED.

CAB TOP

14 GAUGE STEEL TOP, REINFORCED TO COMPLY WITH ASME A17.1 CODE. THE EXTERIOR IS PRIMED AND THE INTERIOR IS PAINTED F-114 REFLECTIVE WHITE. RAILING TO BE PROVIDED PER ASME CODE A17.1.

SUSPENDED CEILING

THE FRAME IS AN ALL WELDED ONE PIECE CONSTRUCTION, PAINTED F-112 BLACK. THE CEILING CONSISTS OF WHITE TRANSLUCENT PLASTIC PANELS AS REQUIRED.

LIGHTING

FLUORESCENT LIGHTING DIFFUSED THROUGH A CLOSED WHITE TRANSLUCENT PLASTIC GRID.

FRONT RETURN AND TRANSOM

COLUMN TYPE SWING. STAINLESS STEEL W/ #4 BRUSH FINISH

CAB DOORS

HOLLOW METAL REINFORCED AND DRILLED FOR DOOR OPERATOR. INTERIOR IS BAKED ENAMEL AS SELECTED.

CAB BASE

F-112 BLACK BAKED ENAMEL

HANDRAILS

1 1/2" DIAMETER STAINLESS STEEL #4 CONTINUOUS RAIL.

FAN

TWO SPEED EXHAUST.

EMERGENCY EXIT

TOP EMERGENCY EXIT PROVIDED WITH CARTOP EXIT SWITCH.

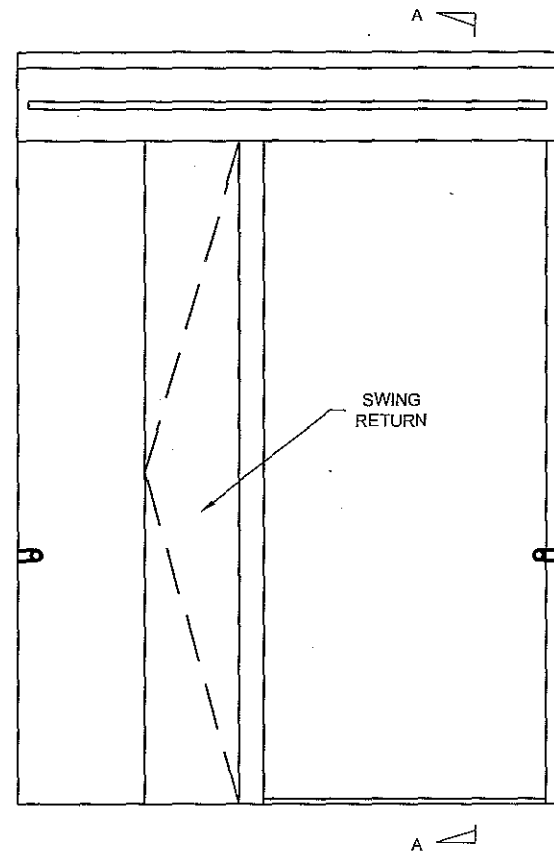
CAB SILL

EXTRUDED ALUMINUM.

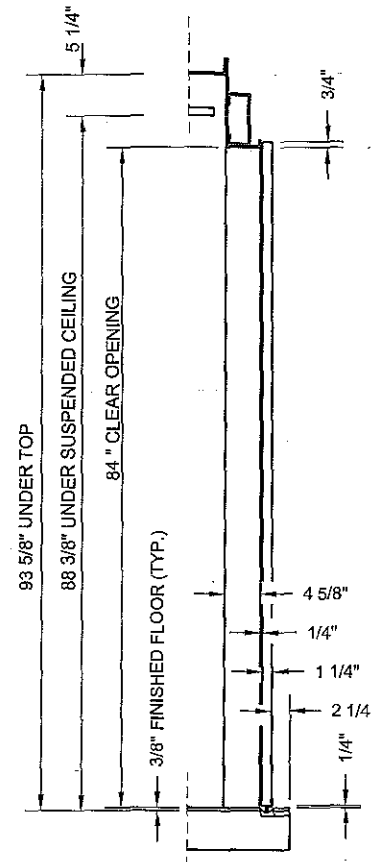
CAB FLOORING

FLOORING BY OTHERS.

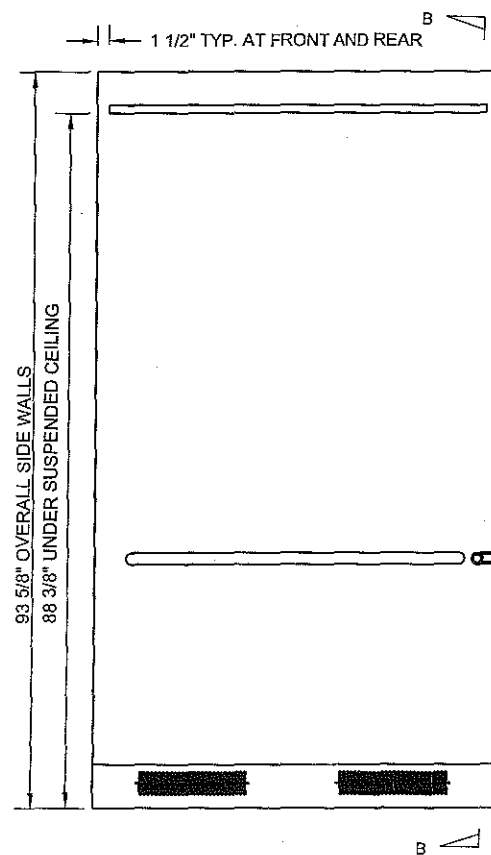
DATE	SYM.	REVISION	BY			
DESIGNED PER ASME A17.1		DO NOT SCALE THIS DRAWING				
FOR: RC COMPANY		ELEV #				
ADDRESS:						
CITY: POTTSTOWN, PA 19464-						
ARCHITECT:						
GENERAL CONTRACTOR:						
ELEVATOR CONTRACTOR: METRO ELEVATOR						
This drawing and all information thereon is the proprietary property of Vertical Express and must not be made public or copied. This drawing is loaned subject to return on demand and is not to be used directly or indirectly in any manner detrimental to the interest of Vertical Express.						
vertical express			EU5826			
A Division of ThyssenKrupp Elevator						
DWN	DATE	BRANCH	JOB NUMBER	DRAWING NO.	REV.	SHEET NO.
JTW	05/11/05	E-U	EU5826	CB58261		1 OF 4



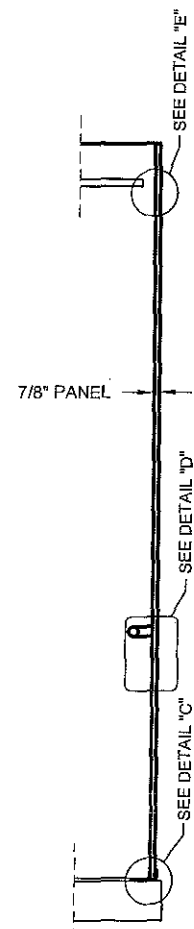
ELEVATION 1



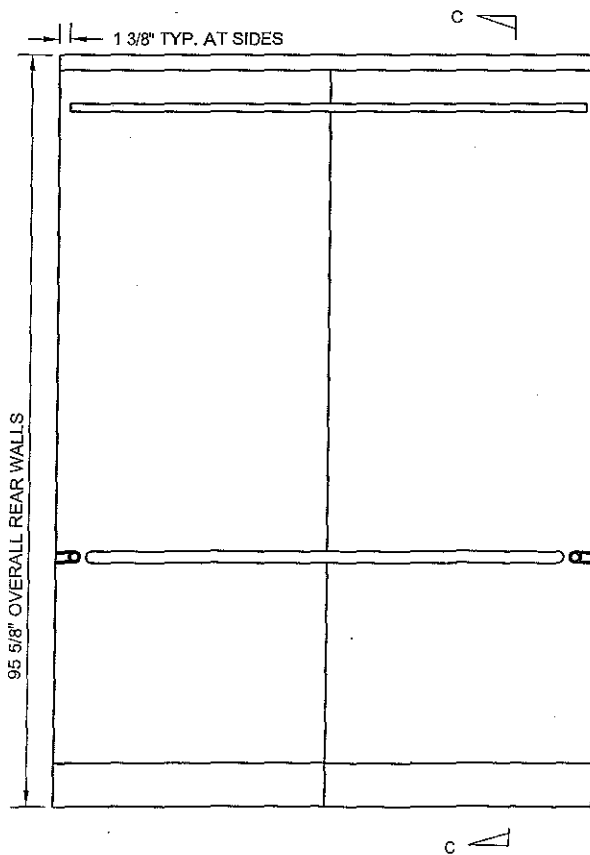
SECTION A-A



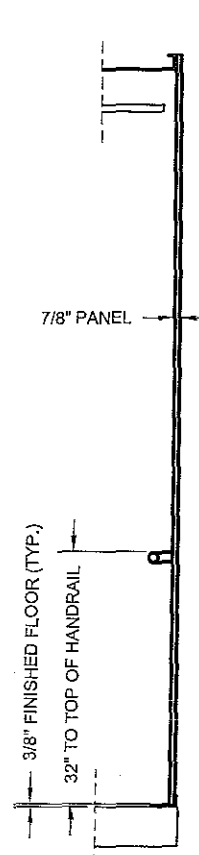
ELEVATION 2 & 4
RIGHT SIDE SHOWN
LEFT SIDE OPPOSITE



SECTION B-B



ELEVATION 3



SECTION C-C

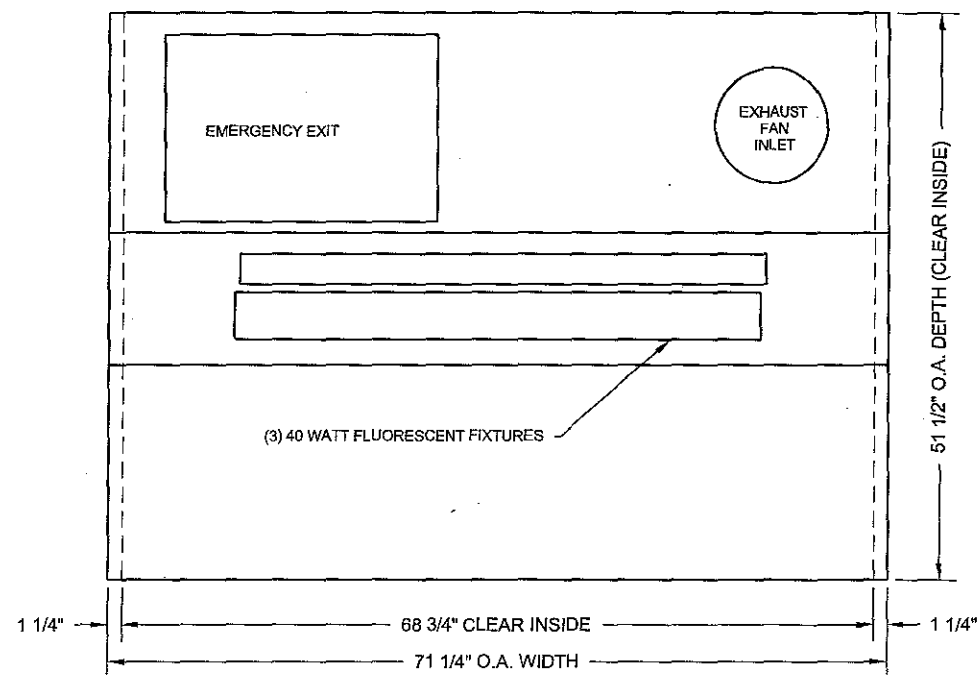
VENTILATION AS REQUIRED PER ASME A17.1 CODE
(SEE DETAIL F)

DATE	SYM.	REVISION	BY
DESIGNED PER ASME A17.1		DO NOT SCALE THIS DRAWING	
FOR: RC COMPANY		ELEV #	
ADDRESS:			
CITY: POTTSTOWN, PA 19464			
ARCHITECT:			
GENERAL CONTRACTOR:			
ELEVATOR CONTRACTOR: METRO ELEVATOR			

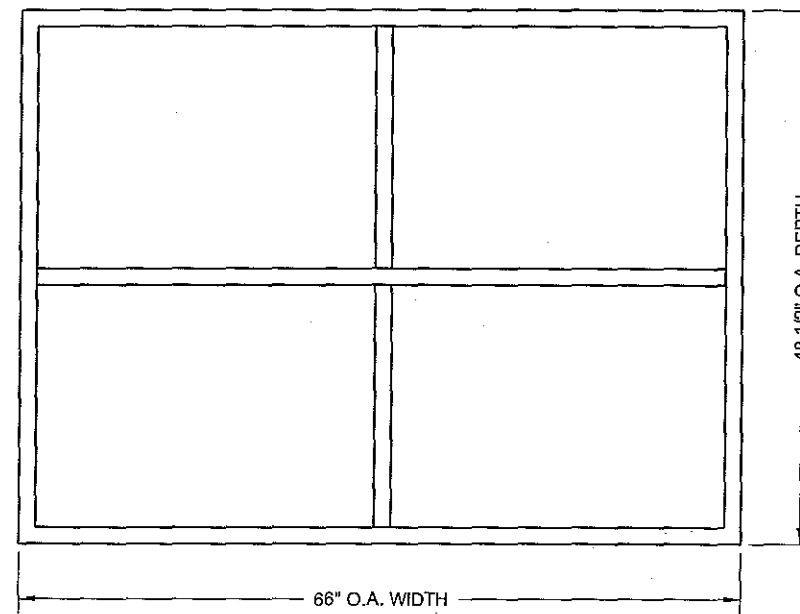
This drawing and all information thereon is the proprietary property of Vertical Express and must not be made public or copied. This drawing is loaned subject to return on demand and is not to be used directly or indirectly in any manner detrimental to the interest of Vertical Express.




DWN	DATE	BRANCH	JOB NUMBER	DRAWING NO.	REV.	SHEET NO.
JTW	05/11/05	E-U	EU5826	CB58262		2 OF 4

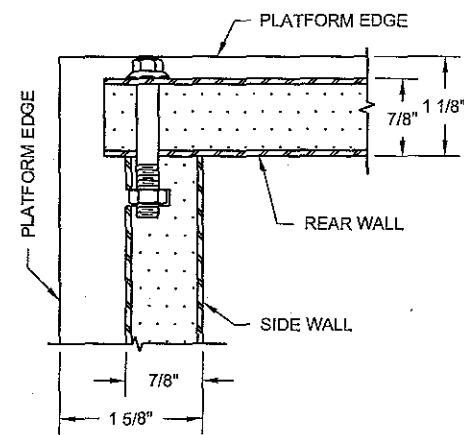


CARTOP (REFLECTED VIEW)

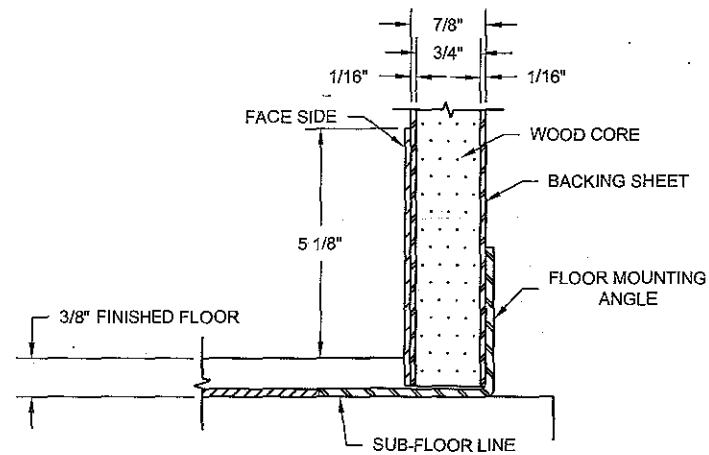


CEILING (REFLECTED VIEW)

DATE	SYM.	REVISION	BY			
DESIGNED PER ASME A17.1		DO NOT SCALE THIS DRAWING				
FOR: RC COMPANY		ELEV#				
ADDRESS:						
CITY: POTTSTOWN, PA 19464						
ARCHITECT:						
GENERAL CONTRACTOR:						
ELEVATOR CONTRACTOR: METRO ELEVATOR						
<small>This drawing and all information thereon is the proprietary property of Vertical Express and must not be made public or copied. This drawing is loaned subject to return on demand and is not to be used directly or indirectly in any manner detrimental to the interest of Vertical Express.</small>						
			EU5826			
 <small>A Division of ThyssenKrupp Elevator</small>						
DWN	DATE	BRANCH	JOB NUMBER	DRAWING NO.	REV.	SHEET NO.
JTW	05/11/05	E-U	EU5826	C858263		3 OF 4

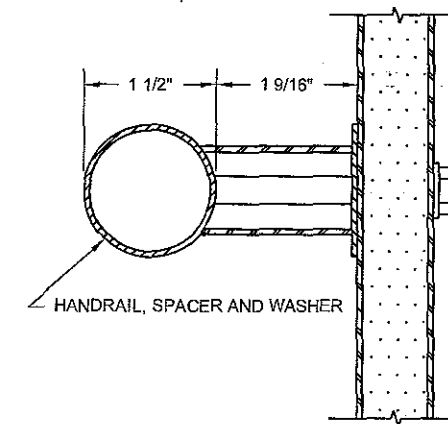


DETAIL "A"
(TYP. CORNER)

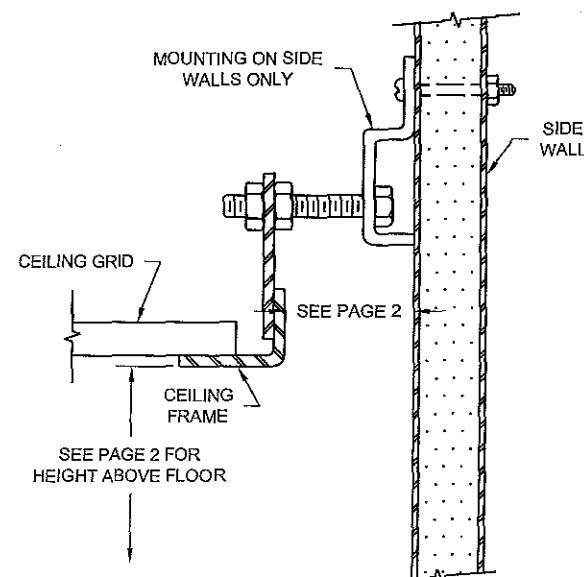


DETAIL "C"
(TYP. FLOOR MOUNTING)

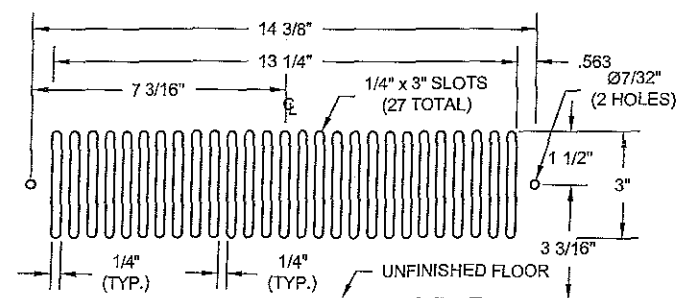
#4 STAINLESS STEEL
HANDRAIL FINISH




DETAIL "D"
(TYP. HANDRAIL AND ATTACHMENT)

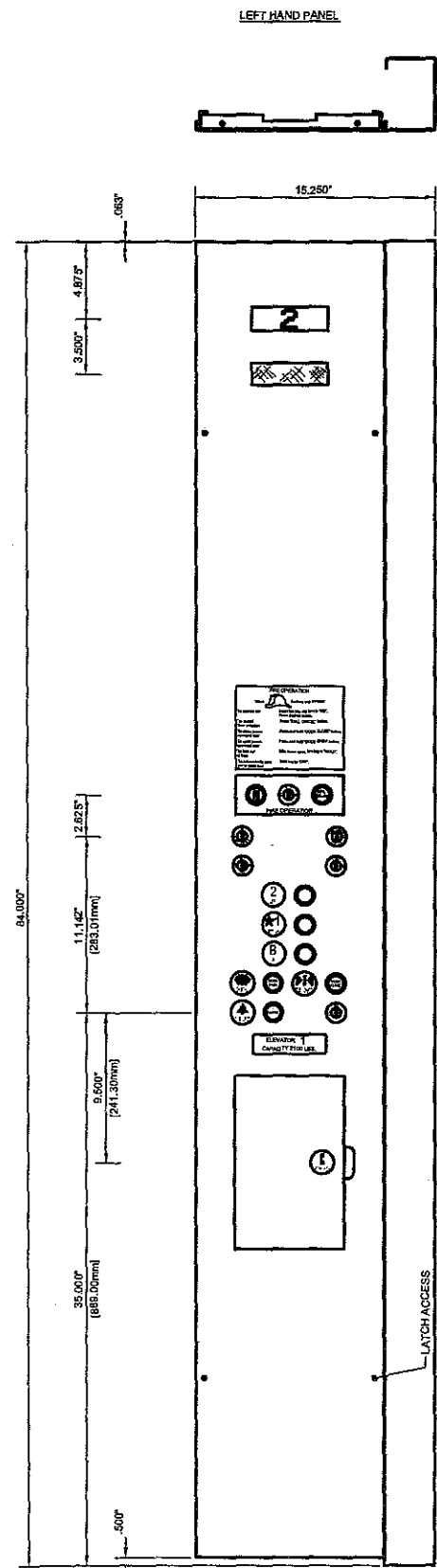


DETAIL "E"
(TYP. CEILING MOUNTING)



DETAIL "F"
(TYP. VENT DETAIL)

DATE	SYM.	REVISION	BY			
DESIGNED PER ASME A17.1		DO NOT SCALE THIS DRAWING				
FOR: RC COMPANY		ELEV #				
ADDRESS:						
CITY: POTTSTOWN, PA 19464						
ARCHITECT:						
GENERAL CONTRACTOR:						
ELEVATOR CONTRACTOR: METRO ELEVATOR						
<p>This drawing and all information thereon is the proprietary property of Vertical Express and must not be made public or copied. This drawing is loaned subject to return on demand and is not to be used directly or indirectly in any manner detrimental to the interest of Vertical Express.</p>						
			EUS826 <small>A Division of ThyssenKrupp Elevator</small>			
DWN	DATE	BRANCH	JOB NUMBER	DRAWING NO.	REV.	SHEET NO.
JTW	05/11/05	E-U	EUS826	CS58264		4 OF 4



FIRE OPERATION

When fire alarm flashes, exit elevator

To operate car: Insert fire key and turn to "ON". Press desired button.

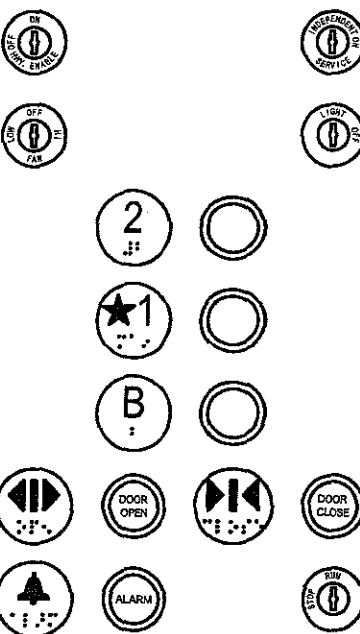
To cancel floor selection: Press "CALL CANCEL" button.

To close power-operated door: Press and hold "DOOR CLOSE" button.

To open power-operated door: Press and hold "DOOR OPEN" button.

To hold car at floor: With doors open, turn key to "HOLD".

To automatically send car to recall floor: Turn key to "OFF".



ELEVATOR 1
CAPACITY 2100 LBS.

CAR OPERATING STATION

FIRE SIGNAGE PLAQUE
PLAQUE IS 3.275" HIGH X 6.900" WIDE WITH PLASTIC MATTE FINISH, BLACK BACKGROUND, AND WHITE TEXT. "FIRE OPERATION" TO BE .250" HIGH, ALL OTHER TO BE .100" HIGH. FIRE HAT TO BE RED IN COLOR. PLAQUE TO BE ATTACHED WITH ADHESIVE BACKING.

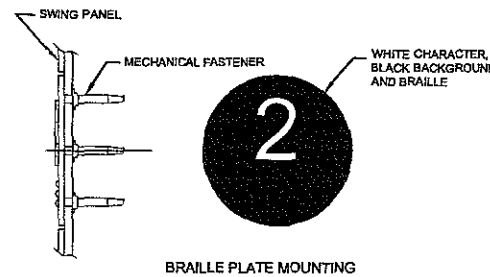
KEY SWITCHES
THE KEY SWITCH CONSISTS OF A CHROME KEY CYLINDER MOUNTED IN A 1 1/4" DIAMETER BEZEL. THE GRAPHICS FOR THE KEY POSITIONS ARE PAD PRINTED ON THE SURFACE OF THE BEZEL AND ARE COLORED WHITE. THE BEZELS ARE BLACK EXCEPT FOR THE FIRE SERVICE WHICH IS RED.

EMERGENCY RETURN JEWEL / CALL CANCEL BUTTON
THE EMERGENCY RETURN JEWEL CONSIST OF A 1 1/4" DIAMETER RED HALO WITH A 15/16" DIAMETER WHITE ILLUMINATING JEWEL WITH RED FIRE HAT LOGO IN CENTER. THE CALL CANCEL BUTTON CONSIST OF A 1 1/4" DIAMETER RED HALO & LOGO WITH A 15/16" DIAMETER NON-ILLUMINATING BUTTON.

ALARM AND FLOOR BUTTONS
THE PUSH-BUTTON CONSIST OF A 1 1/4" DIAMETER BLACK HALO WITH A 15/16" DIAMETER WHITE ILLUMINATING BUTTON.

DOOR OPEN AND DOOR CLOSE BUTTONS
THE PUSH-BUTTON CONSIST OF A 1 1/4" DIAMETER BLACK HALO WITH A 15/16" DIAMETER NON-ILLUMINATING BUTTON.

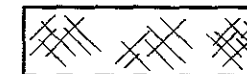
BRAILLE PLATES
1 1/2" DIAMETER CAST PLATES WITH WHITE CHARACTERS ON BLACK BACKGROUND. MEETS ANSI A117.1 70% CONTRAST REQUIREMENTS. MECHANICALLY FASTENED FROM BACK SIDE. INCLUDES ARABIC OR N.E.I.I. DESIGNATIONS AND BRAILLE.



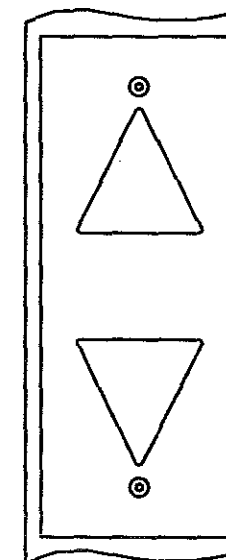
CAPACITY PLATE
4 3/4" X 1 1/4" PLATE TO MATCH FACEPLATE WITH BLACK TEXT. MECHANICALLY FASTENED FROM BACK SIDE.



POSITION INDICATOR
4 7/8" X 1 1/2" WINDOW THAT CONTAINS ALPHA-NUMERIC DISPLAYS. DESIGNATIONS WILL ILLUMINATE RED.



EMERGENCY LIGHT
4 7/8" X 1 3/8" WINDOW MADE OF P-4 FLEXIGLAS. EMERGENCY LIGHT WILL LIGHT CLEAR.



CAR RIDING LANTERN
FACEPLATE: 11 GAUGE METAL TO MATCH FINISH OF RETURN.

LANTERNS: WHITE LEXAN PLASTIC LENSES 2 1/2" X 2 1/2" PROJECT 5/8" FROM FACEPLATE. LANTERNS ILLUMINATE TO INDICATE THE DIRECTION OF TRAVEL. LANTERNS WILL ILLUMINATE WHITE.

AUDIBLE SIGNAL
AN INTERNAL CHIME SOUNDS SIMULTANEOUSLY WITH ILLUMINATION OF A LANTERN. SOUNDS ONCE FOR UP AND TWICE FOR DOWN.

LOCATION: RETURN
TOTAL REQUIRED: 1

CUTOUT MOUNTING DATA - CAR RIDING LANTERN
FACEPLATE: 4.000"W x 10.000"H W/ MTS. @ 8.000" O.C.
BOX: 3.375"W x 8.888"H x 2.500"D (WHEN REQUIRED)
CUTOUT: 3.500"W x 8.813"H

DATE	SYM.	REVISION	BY
DESIGNED PER ASME A17.1		DO NOT SCALE THIS DRAWING	
FOR: RC COMPANY		ELEV # 1	
ADDRESS:			
CITY: POTTSTOWN, PA 19464-			
ARCHITECT:			
GENERAL CONTRACTOR:			
ELEVATOR CONTRACTOR: METRO ELEVATOR			

This drawing and all information thereon is the proprietary property of Vertical Express and must not be made public or copied. This drawing is loaned subject to return on demand and is not to be used directly or indirectly in any manner detrimental to the interest of Vertical Express.

EU5826

vertical express

A Division of ThyssenKrupp Elevator

DWN	DATE	BRANCH	JOB NUMBER	DRAWING NO.	REV.	SHEET NO.
MK	05/16/05	E-U	EU5826	CM5826		1 OF 1

FLUSH PHONE COMPARTMENT
7" X 11" DOOR THAT MATCHES THE CAR STATION FINISH. THE DOOR HAS A RECESSED PULL FOR OPENING AND A PHONE SYMBOL.

NOTES
RETURN PANEL SKIN: STAINLESS STEEL W/ #4 BRUSH FINISH
CONTROLLER: ICON
STATION: MAIN
TOTAL REQUIRED: 1

HALL STATIONS

FACEPLATE

TYPE: VERTICAL
 FINISH: 11 GAUGE STAINLESS STEEL W/ #4 BRUSH FINISH
 MFG. HARDWARE: BUTTON HEAD SOCKET SCREWS
 KEYSWITCH FINISH: CHROME

CUTOUT MOUNTING DATA - HALL STATIONS

FACEPLATE: 3 1/2" (88.90mm)W x 13" (330.20mm)H WITH
 MFG. HARDWARE AT 11 3/16" (284.18mm) O.C.
 BOX: 2 3/4" (69.85mm)W x 12 1/2" (317.63mm)H x 2 1/2" (63.50mm)D
 CUTOUT: 2 7/8" (73.03mm)W x 12 1/8" (307.58mm)H

CUTOUT MOUNTING DATA - HALL STATIONS

FACEPLATE: 3 1/2" (88.90mm)W x 9" (228.60mm)H WITH
 MFG. HARDWARE AT 7 3/16" (182.56mm) O.C.
 BOX: 2 3/4" (69.85mm)W x 8" (203.20mm)H x 2 1/2" (63.50mm)D
 CUTOUT: 2 7/8" (73.03mm)W x 8 1/8" (206.35mm)H

BUTTONS

1 1/4" DIA. BLACK HALO AND 15/16" DIA.
 WHITE ILLUMINATED BUTTON WITH 5/8"
 HIGH BLACK ARROW.

FIRE SERVICE

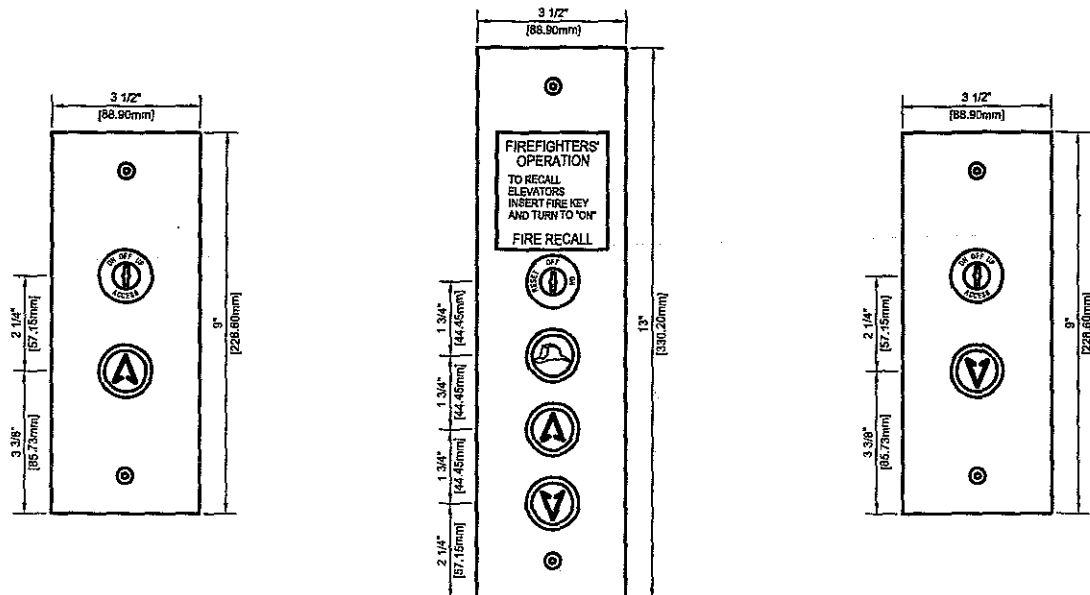
1 1/4" DIA. RED BEZEL WITH WHITE LETTERING.
 KEY IS REMOVABLE IN "OFF" & "ON" POSITIONS.
 KEY IS NOT REMOVABLE IN "RESET" POSITION.
 1 1/4" DIA. RED HALO AND 15/16" DIA. WHITE
 ILLUMINATED JEWEL WITH RED FIRE HAT.

KEYSWITCHES

1 1/4" DIA. BLACK BEZEL WITH WHITE
 LETTERING. (SPRING RETURN)

FIRE SERVICE SIGNAGE

AN APPLIED PLASTIC PLAQUE WITH WHITE
 RAISED LETTERS ON A RED BACKGROUND



TOTAL REQUIRED: 1
 AT FLOOR: B
 ELEVATOR NO.: 1

TOTAL REQUIRED: 1
 AT FLOOR: 1
 ELEVATOR NO.: 1

TOTAL REQUIRED: 1
 AT FLOOR: 2
 ELEVATOR NO.: 1

POSITION INDICATOR

FACEPLATE

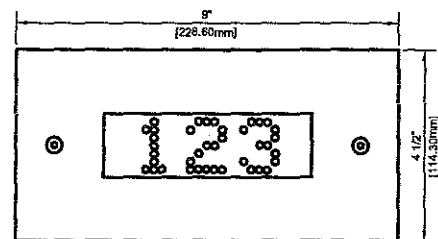
TYPE: HORIZONTAL
 FINISH: STAINLESS STEEL W/ #4 BRUSH FINISH
 MFG. HARDWARE: BUTTON HEAD SOCKET SCREWS

POSITION INDICATOR

THE DISPLAY IS A 4 7/8" W x 1 1/2" H WINDOW
 THAT CONTAINS DISCRETE DOT MATRIX
 DISPLAYS THAT ILLUMINATE RED.

CUTOUT MOUNTING DATA - POSITION INDICATOR

FACEPLATE: 9" W x 4 1/2" H WITH
 MFG. HARDWARE AT 7 3/16" O.C.
 BOX: 8" W x 3 3/4" H x 2 1/2" D
 CUTOUT: 5 1/8" W x 3 7/8" H



TOTAL REQUIRED: 1
 AT FLOOR: 1
 ELEVATOR NO.: 1

DATE	SYM.	REVISION	BY			
DESIGNED PER ASME A17.1		DO NOT SCALE THIS DRAWING				
FOR: RC COMPANY		ELEV # 1				
ADDRESS:						
CITY: POTTSTOWN, PA 19464						
ARCHITECT:						
GENERAL CONTRACTOR:						
ELEVATOR CONTRACTOR: METRO ELEVATOR						
This drawing and all information thereon is the proprietary property of Vertical Express and must not be made public or copied. This drawing is loaned subject to return on demand and is not to be used directly or indirectly in any manner detrimental to the interest of Vertical Express.						
vertical express A Division of ThyssenKrupp Elevator			EU5926			
OWN	DATE	BRANCH	JOB NUMBER	DRAWING NO.	REV.	SHEET NO.
MK	05/16/05	E-U	EU5826	HF5826		1 OF 1